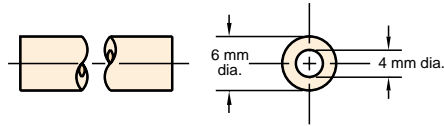


PET1-0604M-□-□



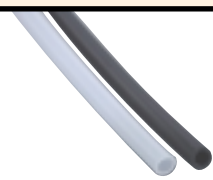
6 mm O.D. Polyethylene Tubing
Linear low density tubing



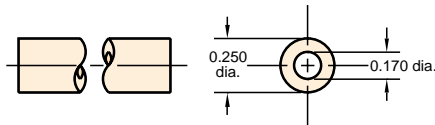
Working Range: 0 to 105 psig at 100°F Maximum 120°F
Static Burst Pressure: Approximately 560 psig at 75°F
Colors: Solid: Black or Natural
Lengths Available: 50 and 500 feet
Bend Radius: 1 1/4"
Note: Designed for use with push-in fittings

Note: Specify color on order, and use full product number (including code letters for color) as shown in Price List. If no color is specified, natural will be furnished.

PET1-0805-□-□



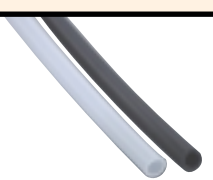
1/4" O.D. Polyethylene Tubing
Linear low density tubing



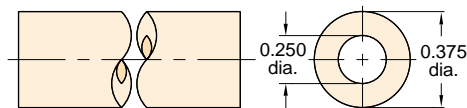
Working Range: 0 to 105 psig at 100°F Maximum 120°F
Static Burst Pressure: Approximately 480 psig at 75°F
Colors: Solid: Black or Natural
Lengths Available: 50 and 500 feet
Bend Radius: 1 1/4"
Note: Designed for use with push-in fittings

Note: Specify color on order, and use full product number (including code letters for color) as shown in Price List. If no color is specified, natural will be furnished.

PET1-1208-□-□



3/8" O.D. Polyethylene Tubing
Linear low density tubing



Working Range: 0 to 105 psig at 100°F Maximum 120°F
Static Burst Pressure: Approximately 600 psig at 75°F
Colors: Solid: Black or Natural
Lengths Available: 50 and 500 feet
Bend Radius: 2"
Note: Designed for use with push-in fittings

Note: Specify color on order, and use full product number (including code letters for color) as shown in Price List. If no color is specified, natural will be furnished.